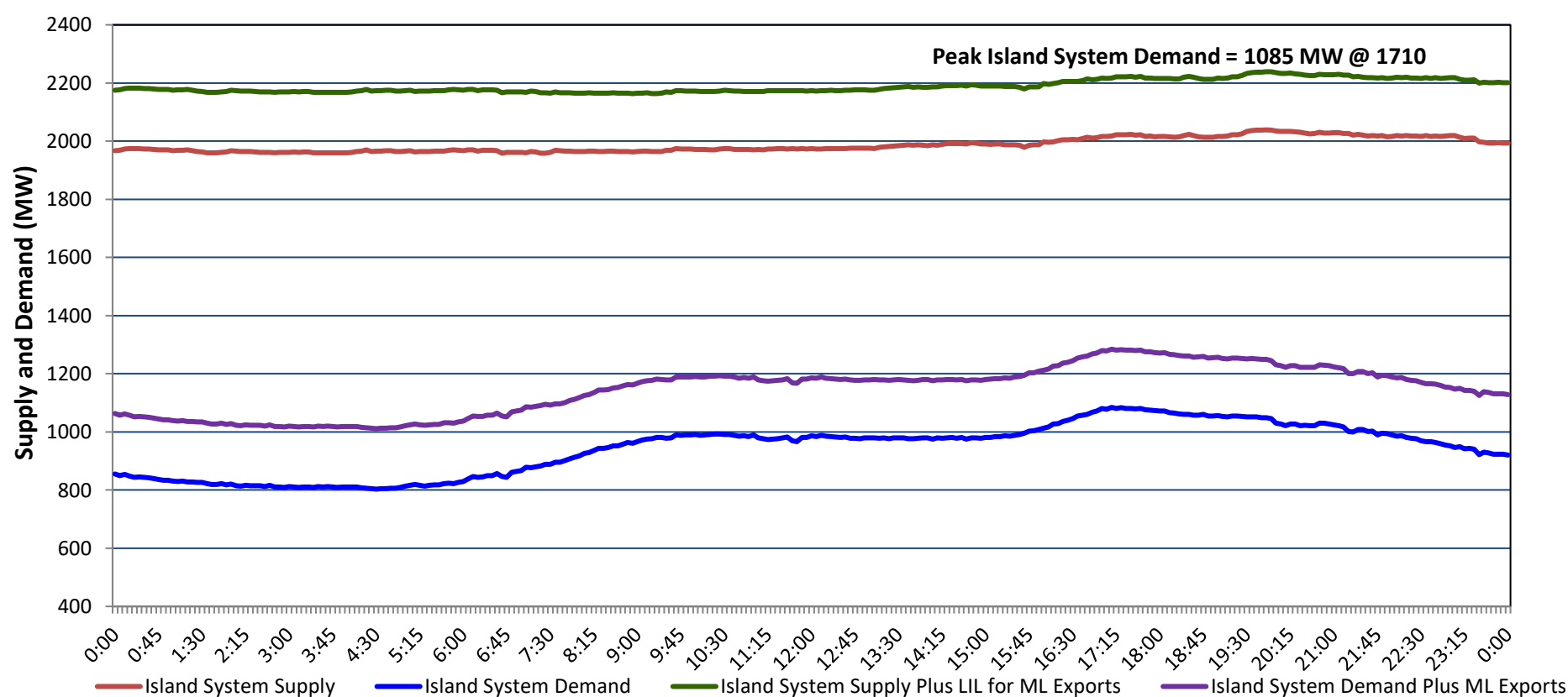


Newfoundland Labrador Hydro (NLH) Supply and Demand Status Report Filed Tuesday, November 12, 2024

Section 1 Island Interconnected System - Supply, Demand & Exports Actual 24 Hour System Performance For Saturday, November 09, 2024



Island Supply Notes For November 09, 2024 ¹

- A As of 0000 hours, October 20, 2024, Holyrood Unit 1 unavailable due to forced extension to planned outage (170 MW).
 B As of 2153 hours, November 07, 2024, Hinds Lake Unit unavailable due to forced outage (75 MW).

Section 2 Island Interconnected System - Supply, Demand & Outlook

Sun, Nov 10, 2024	Island System Outlook ²	Seven-Day Forecast	Island System Daily Peak Demand (MW)	
			Forecast ⁸	Adjusted ⁶
Island System Supply: ⁴	1,910 MW	Sunday, November 10, 2024	1,210	1,130
NLH Island Generation: ^{3,7}	1,325 MW	Monday, November 11, 2024	1,055	975
NLH Island Power Purchases: ⁵	95 MW	Tuesday, November 12, 2024	970	890
NP and CBPP Owned Generation:	205 MW	Wednesday, November 13, 2024	1,065	985
LIL/ML Net Imports to Island: ⁹	285 MW	Thursday, November 14, 2024	1,065	985
		Friday, November 15, 2024	1,035	955
7-Day Island Peak Demand Forecast:	1,210 MW	Saturday, November 16, 2024	1,030	950

Island Supply Notes For November 10, 2024

- C At 0700 hours, November 10, 2024, Holyrood Gas Turbine unavailable due to planned outage (123.5 MW).

- Notes:
1. Generation outages for running and corrective maintenance are included. These are not unusual for power system operations. They generally do not impact customer supply. Hydro schedules outages to system equipment whenever possible to coincide with periods when customer demands are low and sufficient supply reserves are available. However, from time to time equipment outages are necessary and reserves may be impacted.
 2. As of 0800 Hours.
 3. Gross continuous unit output.
 4. Gross output from all Island sources (including Note 4).
 5. NLH Island Power Purchases include: ML Imports, Exploits Generation, Rattle Brook, Star Lake, Wind Generation and capacity assistance (when applicable).
 6. Adjusted for interruptible load and the impact of voltage reduction when applicable.
 7. Due to limitations inherent in the design of combustion turbines, the output of combustion turbines may be reduced in the event that ambient temperatures exceed the threshold required for full rated output. This threshold is dependent on the design of each turbine.
 8. Does not include ML Exports.
 9. LIL Import sunk in the Island System. Actual LIL flows will be restricted by various system conditions including, but not limited to, Island Load, ML Exports and Avalon Unit status.

Section 3 Island Peak Demand and Exports Information Previous Day Actual Peak and Current Day Forecast Peak

Sat, Nov 09, 2024	Island Peak Demand ¹⁰	17:10	1,085 MW
	Exports at Peak		200 MW
	LIL Net Imports to Island		6,774 MWh
Sun, Nov 10, 2024	Forecast Island Peak Demand		1,210 MW

- Notes: 10. Island Demand is supplied by NLH generation and purchases, LIL Imports plus generation owned and operated by Newfoundland Power and Corner Brook Pulp & Paper (Deer Lake Power, DLP).